



INDICATOR MANUAL

INITIAL BALANCE



CONTENTS

1. NINJA TRADER MACHINE ID	2
2. INDICATOR INSTALLATION	4
3. HOW TO ADD AN INDICATOR TO YOUR CHART	6
4. HOW TO PLACE YOUR ORDER ID	7
5. INDICATOR DESCRIPTION	9
6. INDICATOR VALUES	10
7. INDICATOR SETTINGS	11
8. DISCLAIMER	14

1. Ninja Trader Machine ID

We'd like to thank you for purchasing one of our indicators. We really appreciate your vote of confidence in our business and look forward to serving you as one of our valued customers.

If you've already downloaded, installed, and begun working with your indicator that's great. If not, before you begin, we need to let you know that all indicators need to be properly licensed to your NinjaTrader platform before the initial use.

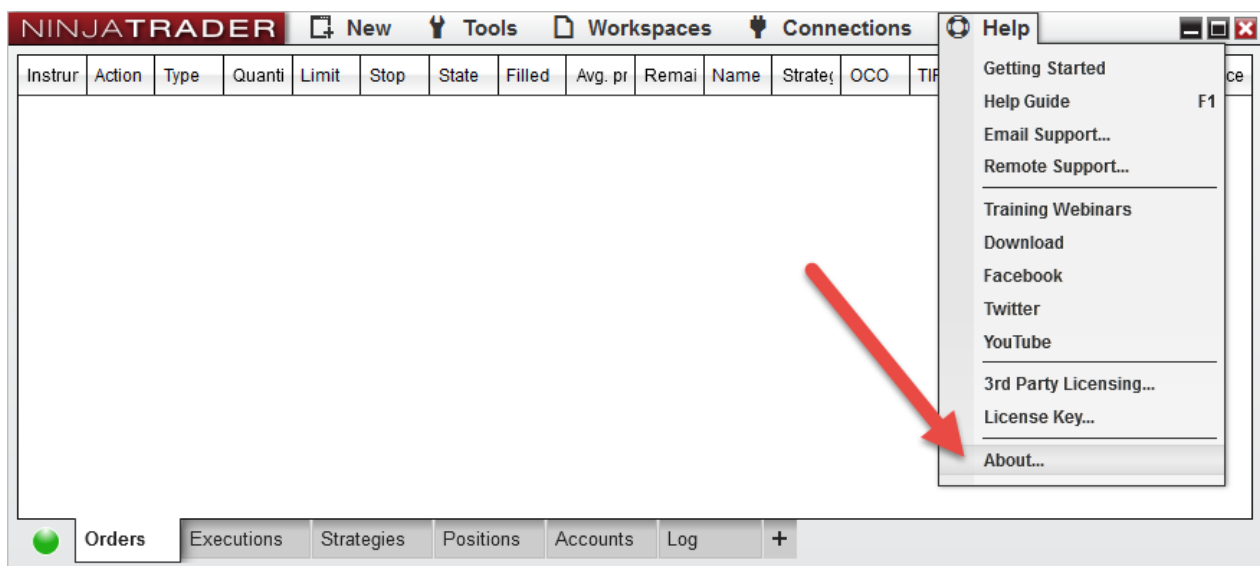
If you provided us with a copy of your NinjaTrader Machine ID at the time of your purchase, then no further action is required. However, if you did not provide your NinjaTrader Machine ID at the time of your purchase, please send us an email to customerservice@ninjacators.com and provide us with your NinjaTrader Machine ID to avoid any interruption in the service.

Here are some instructions on how to find your NinjaTrader Machine ID.

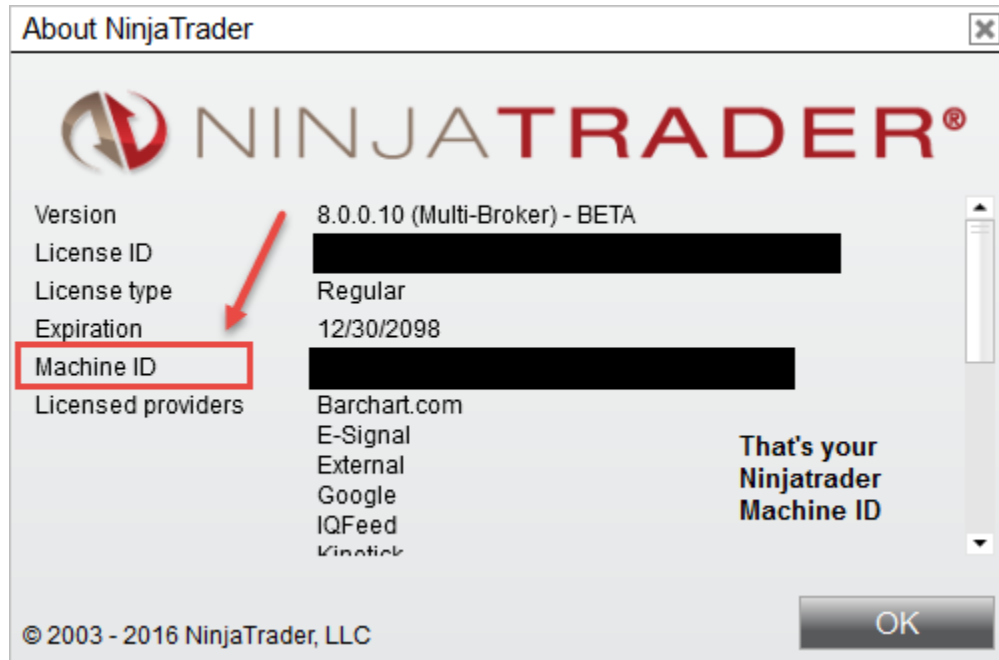
Your NinjaTrader Machine ID is located within your NinjaTrader.

1. Open your NinjaTrader
2. Go to the NinjaTrader Control Center
3. Click on the 'Help' Section in the upper menu
4. Click on 'About' (see Picture Number 1)
5. After you click the 'About' button another window will pop up on your screen. This is where you will find your NinjaTrader Machine ID (see Picture 2)

Picture 1:



Picture 2:



[Watch a quick Video on how to find your NinjaTrader Machine ID](#)

Once you have this information, please send us an email to customerservice@ninjacators.com, copy and paste your NinjaTrader Machine ID into the email, and send the email.

PLEASE NOTE: *If your NinjaTrader Machine ID changes, please provide us with your new NinjaTrader Machine ID and we will change the ID in our system without any cost to you.*

2. Indicator Installation

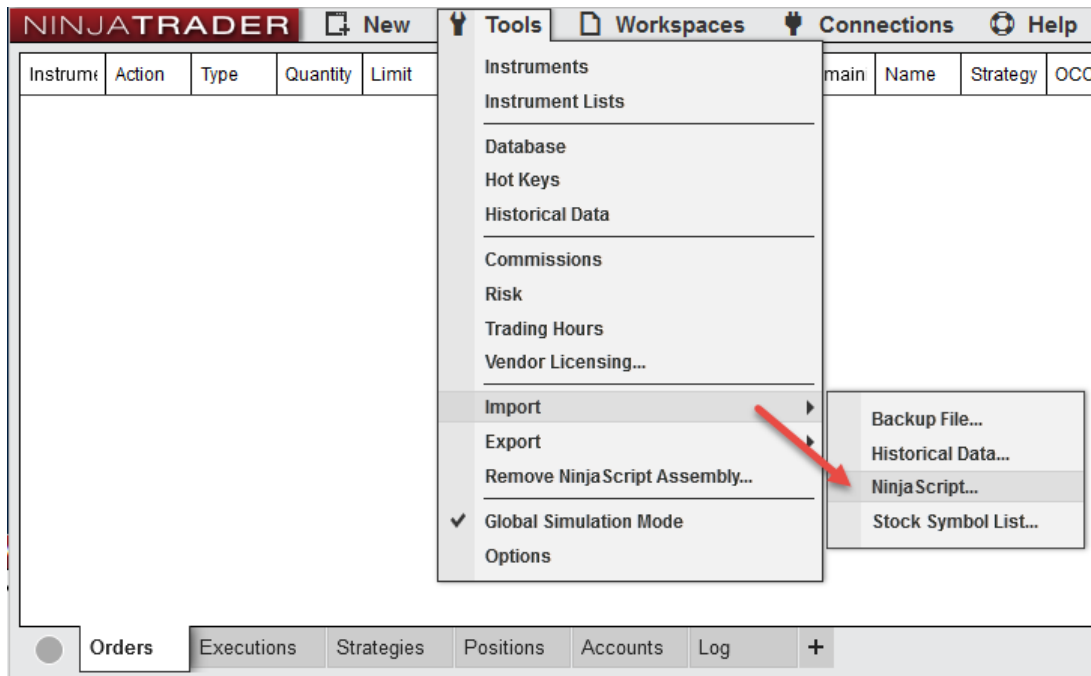
To import an indicator to your NinjaTrader, please be sure that you are saving the provided .zip indicator file to your PC. **Do NOT open or unzip the file!**

You simply want to save the file in the same format as you download it, so that it stays zipped. NinjaTrader will do the hard part for us.

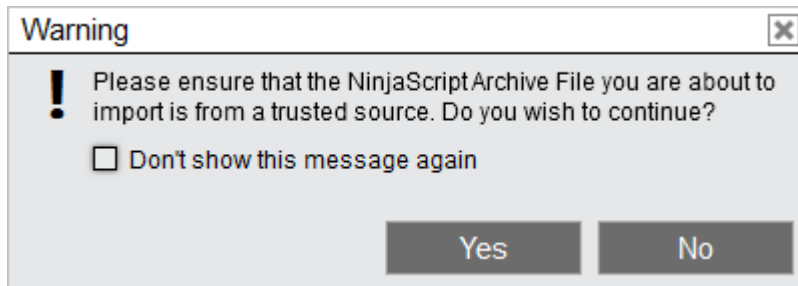
Please use the following steps to install the indicator:

- Open NinjaTrader
- The Control Center will be the first window that is displayed when opening NinjaTrader
- In the Control Center go to >Tools>Import>NinjaScript... (Picture 1)
- Navigate to and choose the indicator file (starts with 'ncat')
- In case a Warning messages appears like seen in Picture 2– Click 'Yes'
Also, if you would not like the message to appear every time you install an indicator, just check the 'Don't show this message again' box.
- After the successful import of the indicator you will receive a notification shown in Picture 3 below. Just click 'OK' and the process is finalized
- **IMPORTANT: Restart your NinjaTrader after the initial indicator import!**

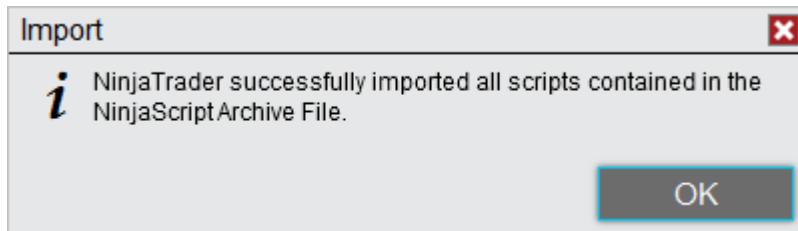
Picture 1:



Picture 2:



Picture 3:



[Watch a quick video on how to install an indicator](#)

3. How to add an indicator to your Chart

Here is how you add an indicator to your Chart:

1. Open a new 'clean' chart. For the first installation and activation of an indicator please use a 'clean' chart without anything on it. No other indicators or templates, just use the default NinjaTrader Chart template.
2. There are 3 different ways to add an indicator to a chart
 - a) Right Mouse Click on the chart – Click on 'Indicators' in window
 - b) Push Ctrl + I on your Keyboard at the same time
 - c) Click on the 'Indicators' Icon in the Chart main navigation
3. New Window 'Indicators' shows up with all available Indicators listed. Highlight the indicator you would like to add to the chart (Remember that Ninjacators Indicators all start with 'ncat') Under 'Configured' – click on 'add' to add the indicator
4. Highlight the indicator and you can start changing the Indicator Properties. Please take a look at the next Step 4 on how to place your Order ID for instructions on the indicator activation.

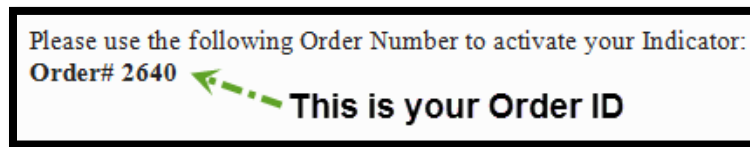
4. How to place your Order ID

You may have already placed your Order ID in your indicator to authorize it, and if you did, no further action is required. **However, if you have not, please follow the additional instructions below to avoid any interruption in your service.**

Each indicator you purchase from Ninjacators will only start working if you provide us with your NinjaTrader Machine ID (point #1 in this manual) and when you use your unique Order ID.

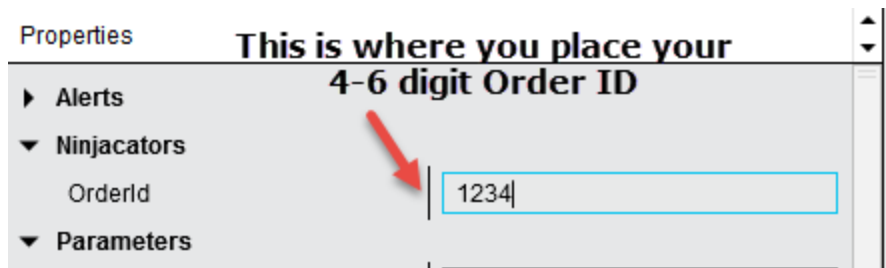
Your unique Order ID can be found inside your email with the Subject Line: IMPORTANT: Your Personal Order ID for Indicator Verification. See example on the picture below (Picture 3):

Picture 3:



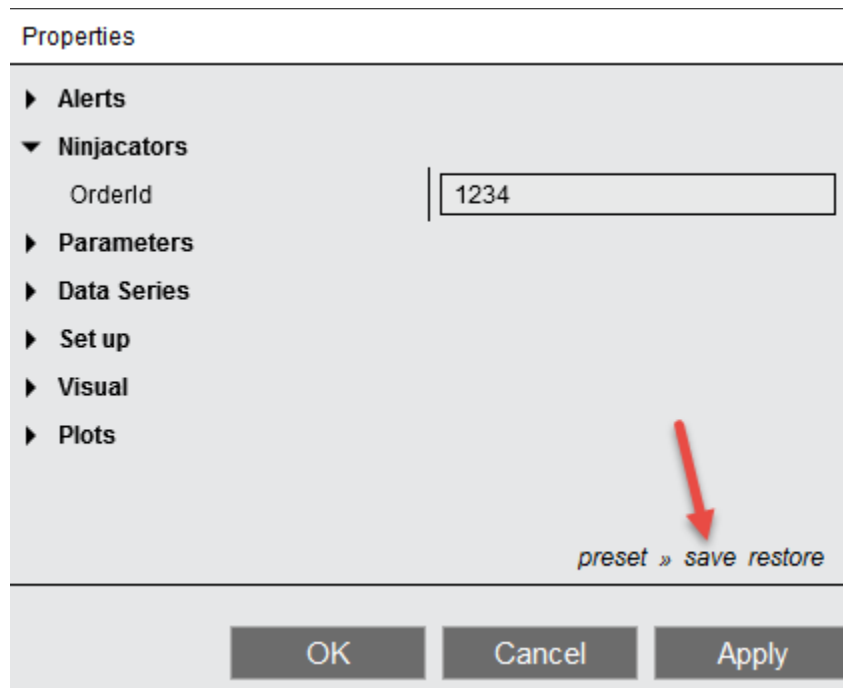
Please take only the 4-6-digit Order ID, only the number (NOT the text or anything else) and place it in the Ninjacators Order ID field inside the indicator settings menu. See example of an indicator window in the picture below (Picture 4):

Picture 4:



Once you've placed the correct Order ID in the Order ID field, please click on 'preset' at the bottom of the indicator settings menu and click on 'save' to make sure that the Order ID is saved as the default for this indicator. After the number is saved you will not need to add the number again, unless you delete the templates and/or reinstall the indicator. It's important to complete this step now, so that you do NOT have to repeat this process again in the future. (See Picture 5)

Picture 5:



Once you have completed these steps, and provided us with your correct NinjaTrader Machine ID, your indicator will be fully functional.

In case you applied the indicator to the chart without adding the Order ID to it first, the indicator might not start working after you added the Order ID. In this case, please save the Order ID and then restart your NinjaTrader. After the restart the verification should be successful and you can start using your Ninjacators indicator.

As always, if you have any technical issues, please call or email us so we can serve you better.

5. Indicator Description

The Initial Balance indicator is a price action indicator which calculates the Initial Balance of any market and visualizes potential turning points and support and resistance levels.

All key levels are calculated and plotted on your trading chart as soon as the Initial Balance is established and before the action starts. These predictive plots will allow you to plan your trade's head of the game to ensure the lowest stress level possible while trading.

No matter if you trade with the Trend or counter Trend you will find a great value in this high quality price action levels which can be used for trade entries, exits or stop placements.



6. Indicator Values

The Initial Balance Indicator is NinjaScript and NinjaStrategy Builder ready.

These are the values to call from top to bottom:

Level2High[0]

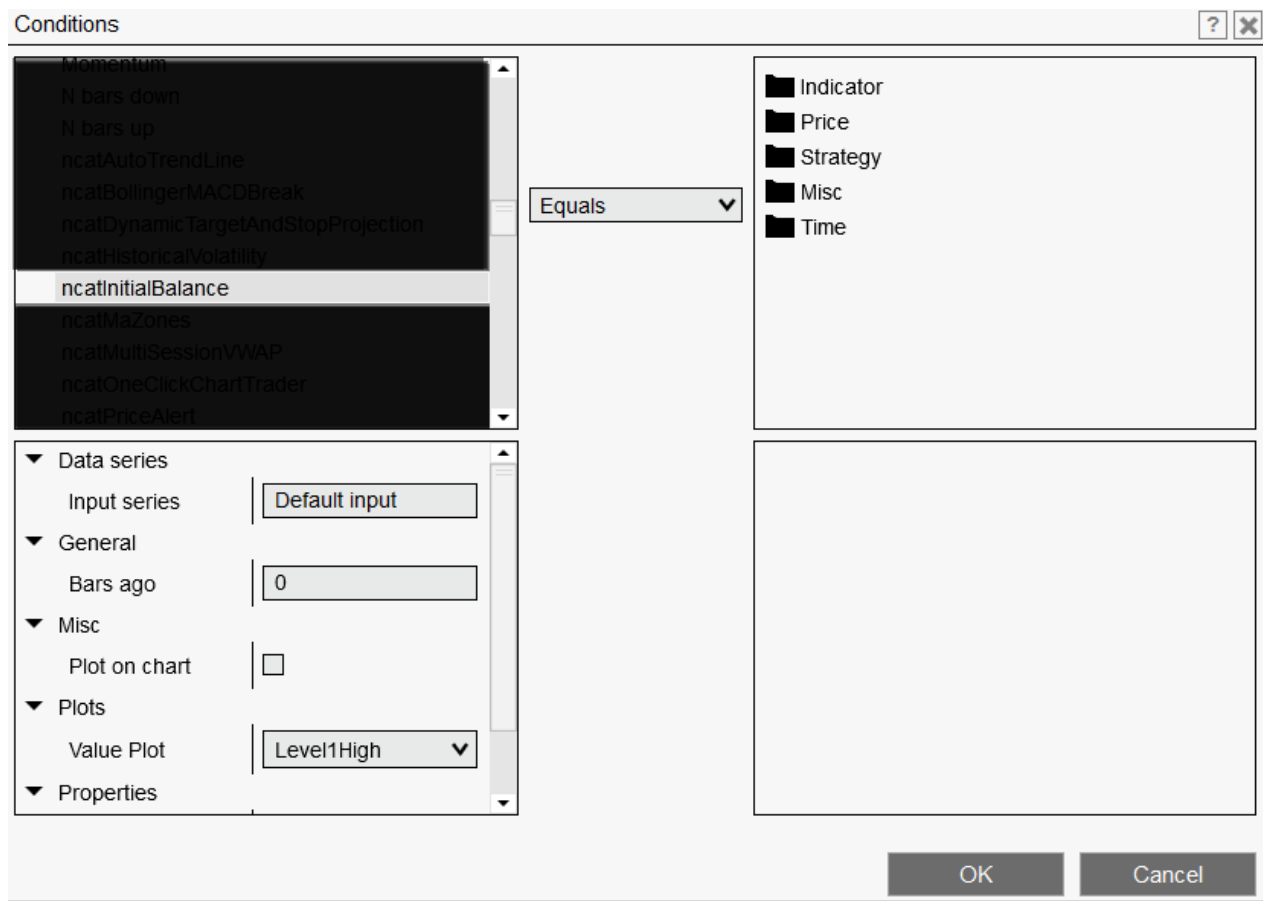
Level1High[0]

IBhigh[0]

IBlow[0]

Level1Low[0]

Level2Low[0]



7. Indicator Settings

Properties	
▼ Ninjacators	
OrderId	1234
▼ Alerts	
InitialBalanceHigh	Disabled
InitialBalanceLow	Disabled
Level1	Disabled
Level2	Disabled
▼ Brushes	
IBbackcolor	Blue
IBbackOpacity	10
IBborder	Gray
IBborderDashHigh	Dash
IBborderDashLow	Dash
IBborderWidthHigh	3
IBborderWidthLow	3
IBlineBrushHigh	MediumSeaGreen
IBlineBrushLow	Red
Level1Brush	Blue
Level1Dash	Dash
Level2Brush	Gray
Level2Dash	Dash
▼ Parameters	
IBend	1400
IBextendedBars	16
IBstart	630
Level1Width	2
Level2Width	2
PercentLevel1	<input checked="" type="checkbox"/>
PercentLevel2	<input checked="" type="checkbox"/>
PercentValue1	50
PercentValue2	100

▼ Data Series	Input series	ES ##-## (1 Minute)
▼ Set up	Calculate	On bar close ▼
	Label	ncatInitialBalance
	Maximum bars look back	256 ▼
▼ Visual	Auto scale	<input checked="" type="checkbox"/>
	Displacement	0
	Display in Data Box	<input checked="" type="checkbox"/>
	Panel	Same as input series ▼
	Price marker(s)	<input checked="" type="checkbox"/>
	Scale justification	Right ▼
	Visible	<input checked="" type="checkbox"/>
		<i>preset</i>

NINJACATORS **Order ID:** Please see the 'How to place your Order ID' section of this manual

ALERTS

InitialBalanceHigh: Alert on Initial Balance high
InitialBalanceLow: Alert on Initial Balance low
Level1: Alert on Level 1
Level2: Alert on Level 2

BRUSHES

IBbackcolor: Color of the Initial Balance background
IBbackOpacity: Opacity of the IB background
IBborder: Color of the IB border
IBborderDashHigh: Style of IB high
IBborderDashLow: Style of IB low
IBborderWidthHigh: Width of IB high
IBborderWidthLow: Width of IB low
IBlineBrushHigh: Color of IB high
IBlineBrushLow: Color of IB low
Level1Brush: Color of Level 1
Level1Dash: Style of Level 1
Level2Brush: Color of Level 2
Level2Dash: Style of Level 2

PARAMETERS

IBend: End time of Initial Balance
IBextendedBars: Number of bars to extend the IB
IBstart: Start time of Initial Balance
Level 1 Width: Width of Level 1
Level 2 Width: Width of Level 2

	PercentLevel1: Show Level 1 Percent PercentLevel2: Show Level 2 Percent PercentValue1: Percentage of Value 1 PercentValue2: Percentage of Value 2
DATA SERIES	Input series: Instrument on which the indicator is calculated on
SET UP	Calculate: Please set "On bar close" for this indicator Label: Indicator Name Maximum bars look back: 256 (Do not change)
VISUAL	Auto Scale: True Displacement: 0 Display in Data Box: False Panel: This will be the panel the indicator is displayed within. We recommend choosing 'New Panel.' Price Marker(s): True Scale justification: Right

8. Disclaimer

ALL SOFTWARE IS PROVIDED TO YOU AS IS AND THERE ARE NO WARRANTIES, CLAIMS OR REPRESENTATIONS MADE BY Ninjacators.com OR ITS SUPPLIERS, EITHER EXPRESS, IMPLIED, OR STATUTORY, WITH RESPECT TO THE SOFTWARE, INCLUDING WARRANTIES OR CONDITIONS OF TITLE, QUALITY, PERFORMANCE, NONINFRINGEMENT, MERCHANTABILITY, OR FITNESS FOR A PARTICULAR PURPOSE, NOR ARE THERE ANY WARRANTIES CREATED BY COURSE OF DEALING, COURSE OF PERFORMANCE, OR TRADE USAGE. NINJACATORS.COM AND ITS SUPPLIERS DO NOT WARRANT THAT THE SOFTWARE WILL MEET YOUR NEEDS OR BE FREE FROM ERRORS, OR THAT THE OPERATIONS OF THE SOFTWARE WILL BE UNINTERRUPTED. NINJACATORS.COM AND ITS SUPPLIERS DO NOT WARRANT THE ACCURACY OF THE REPORTS GENERATED. THE FOREGOING EXCLUSIONS AND DISCLAIMERS ARE AN ESSENTIAL PART OF THIS AGREEMENT AND FORMED THE BASIS FOR DETERMINING THE PRICE CHARGED FOR THE PRODUCTS. SOME STATES DO NOT ALLOW EXCLUSION OF AN IMPLIED WARRANTY, SO THIS DISCLAIMER MAY NOT APPLY TO YOU.

NINJACATORS.COM AND ITS SUPPLIERS WILL NOT BE LIABLE TO YOU OR ANY THIRD-PARTY CLAIMANT FOR ANY INDIRECT, SPECIAL, PUNITIVE, CONSEQUENTIAL, OR INCIDENTAL DAMAGES, WHETHER BASED ON CONTRACT, NEGLIGENCE, STRICT LIABILITY, OR OTHER TORT, BREACH OF ANY STATUTORY DUTY, INDEMNITY OR CONTRIBUTION, OR OTHERWISE, EVEN IF ADVISED OF THE POSSIBILITY OF SUCH DAMAGES. SOME STATES DO NOT ALLOW THE LIMITATION OR EXCLUSION OF LIABILITY FOR INCIDENTAL OR CONSEQUENTIAL DAMAGES, SO THE LIMITATIONS OR EXCLUSIONS IN THIS PARAGRAPH MAY NOT APPLY TO YOU.

Ninjacators.com and its suppliers shall not be liable in any respect for failures to perform hereunder due wholly or substantially to the elements, acts of God, labor disputes, acts of terrorism, acts of civil or military authority, fires, floods, epidemics, quarantine restrictions, armed hostilities, riots and other unavoidable events beyond the control of Ninjacators.com or its suppliers, and the time for performance of obligations hereunder by Ninjacators.com or its suppliers subject to such event shall be extended for the duration of such event.

Ninjacators.com a property of Ninjacators LLC did not summon and/or recommend ANY kind of trading, trading decisions, investment and investment decisions.

CFTC RULE 4.41 - HYPOTHETICAL OR SIMULATED PERFORMANCE RESULTS HAVE CERTAIN LIMITATIONS. UNLIKE AN ACTUAL PERFORMANCE RECORD, SIMULATED RESULTS DO NOT REPRESENT ACTUAL TRADING. ALSO, SINCE THE TRADES HAVE NOT BEEN EXECUTED, THE RESULTS MAY HAVE UNDER-OR-OVER COMPENSATED FOR THE IMPACT, IF ANY, OF CERTAIN MARKET FACTORS, SUCH AS LACK OF LIQUIDITY. SIMULATED TRADING PROGRAMS IN GENERAL ARE ALSO SUBJECT TO THE FACT THAT THEY ARE DESIGNED WITH THE BENEFIT OF HINDSIGHT. NO REPRESENTATION IS BEING MADE THAT ANY ACCOUNT WILL OR IS LIKELY TO ACHIEVE PROFIT OR LOSSES SIMILAR TO THOSE SHOWN.

GOVERNMENT REGULATIONS REQUIRE DISCLOSURE OF THE FACT THAT WHILE THESE METHODS MAY HAVE WORKED IN THE PAST, PAST RESULTS ARE NOT NECESSARILY INDICATIVE OF FUTURE RESULTS. WHILE THERE IS A POTENTIAL FOR PROFITS THERE IS ALSO A RISK OF LOSS. A LOSS INCURRED IN CONNECTION WITH TRADING FUTURES, STOCKS, FOREX, OPTIONS OR ANY KIND OF OTHER TRADING PRODUCTS CAN BE SIGNIFICANT. YOU SHOULD THEREFORE CAREFULLY CONSIDER WHETHER SUCH TRADING IS SUITABLE FOR YOU IN LIGHT OF YOUR FINANCIAL CONDITION SINCE ALL SPECULATIVE TRADING IS INHERENTLY RISKY AND SHOULD ONLY BE UNDERTAKEN BY INDIVIDUALS WITH ADEQUATE RISK CAPITAL.